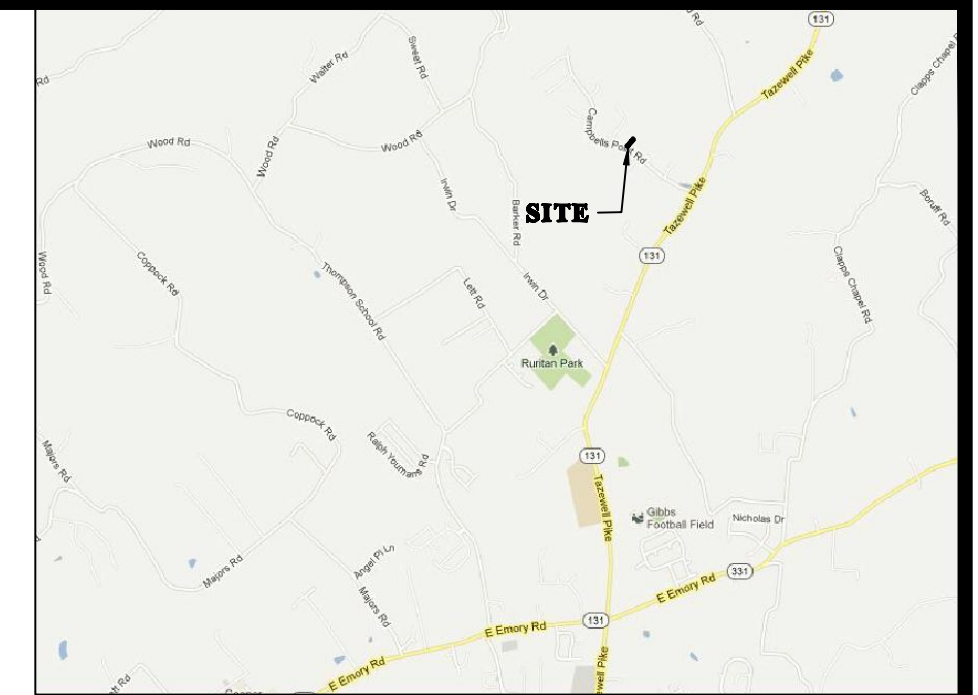
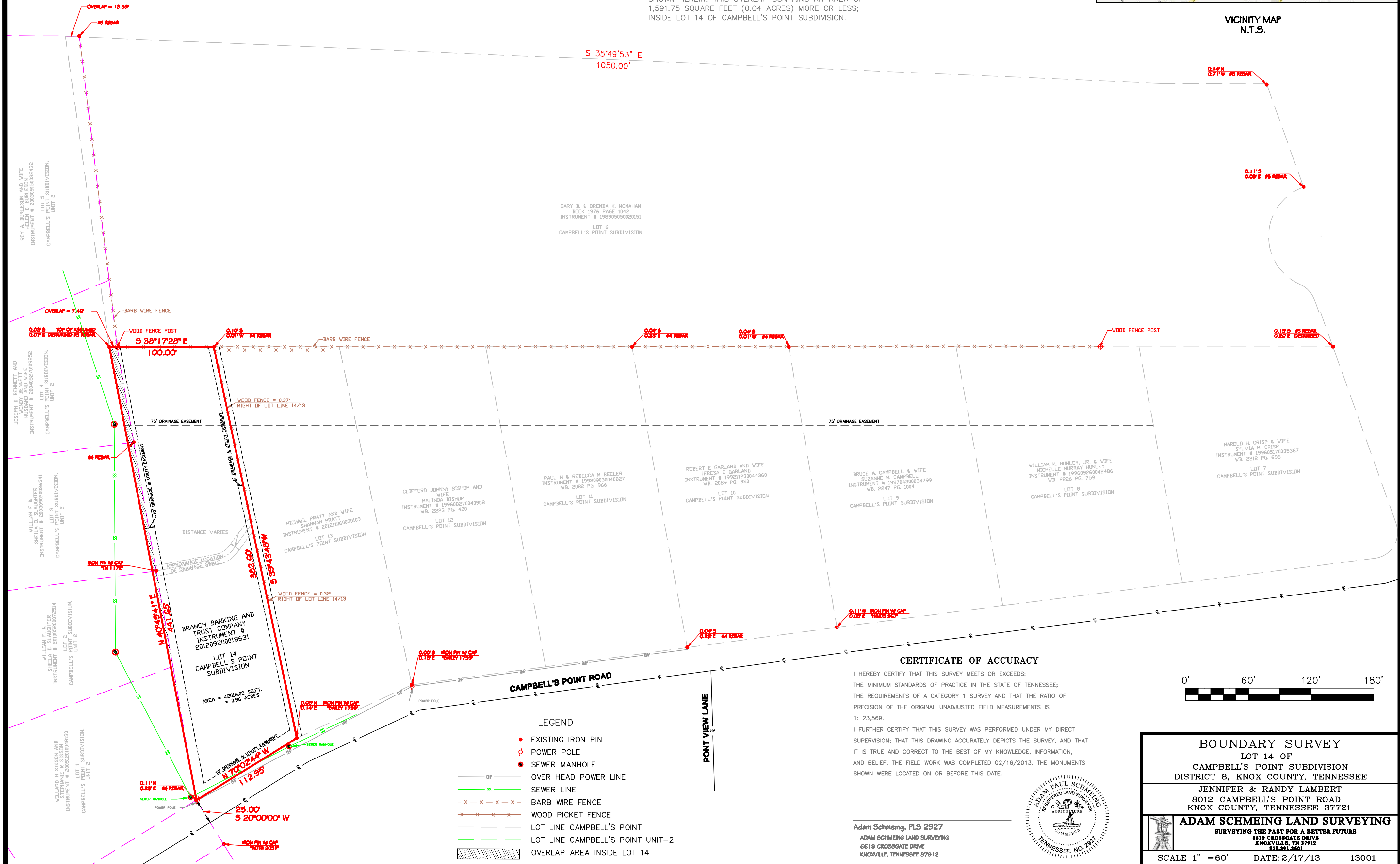
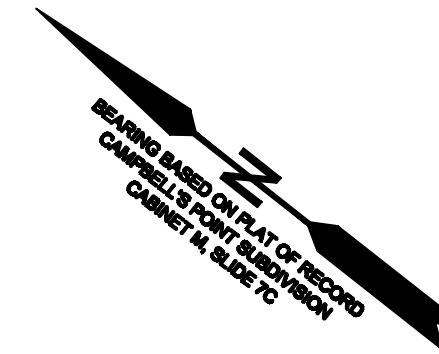


SURVEY NOTES

- CAMPBELL'S POINT SUBDIVISION HAS BEEN ALIGNED USING THE METHOD OF BEST FIT LINE BY LEAST SQUARES, FOR THE FOUND NUMBER FOUR (4) REBAR'S ALONG THE REAR'S OF LOTS 13 AND 10. THE TWO NUMBER FIVE (5) REBARS REPRESENTING THE ORIGINAL MONUMENTS OF THE WEST LINE OF LOT SIX (6) WERE NOT USED BECAUSE THEY WERE PRESUMED TO BE DISTURBED IN THE FIELD. THE LOTS WERE THEN SLID UP AND DOWN ALONG THIS BEST FIT LINE UNTIL IT WAS DETERMINED THAT HOLDING THE FRONT COMMON CORNER TO LOTS 13 AND 14 RESULTED IN THE BEST FIT OF THE REMAINDER OF THE FOUND MONUMENTATIONS WITHIN SAID SUBDIVISION PLAT.
- ON FEBRUARY 12, 2013 I MET WITH DAVID POE PLS # 1647, TO DISCUSS MY FINDINGS. BY COMPARING THE INVERSE DISTANCES AND ANGLES, BETWEEN MY FOUND MONUMENTATION AND HIS ORIGINAL FOUND MONUMENTATION, IT WAS DISCOVERED THAT THE MONUMENTS I RECOVERED WERE RELATIVELY ACCURATE TO THOSE LOCATED BY HIM OR THOSE UNDER HIS DIRECT SUPERVISION DURING THE FIELD WORK FOR CAMPBELL'S POINT SUBDIVISION UNIT-2 IN THE YEAR OF 1996. THOUGH I DID NOT FIND THE ORIGINAL "PPF" SHOWN ON SAID PLAT BEING IN THE REAR LINE OF LOT 4. MR. POE'S FIELD NOTES SHOW THAT SAID "PPF" WAS LOCATED NEAR A FENCE POST. THE DISTANCE BETWEEN HIS "PPF'S" AND MY FENCE POST AND THE COMMON MONUMENT OF THE FRONT LINES OF LOT 13 AND 14 CHECKED VERY CLOSELY (SOME WHERE AROUND 0.20').
- THE DISTANCE BETWEEN SAID FENCE POST AND A # 5 REBAR IN THE NORTH EAST LINE OF LOT 6 CAMPBELL'S POINT SUBDIVISION WAS DETERMINED TO BE 299.66 FEET. WHERE AS CAMPBELL'S POINT SUBDIVISION UNIT-2 SHOWS A DISTANCE OF 299.99 FEET BETWEEN ORIGINAL MONUMENTS FOUND. BASED ON THIS INFORMATION I HAVE ALIGNED UNIT - 2 BY HOLDING ON THE # 5 REBAR IN THE NORTH LINE OF LOT 6 CAMPBELL'S POINT SUBDIVISION AND ROTATING TO MATCH A FOUND # 4 REBAR NEAR THE WEST MOST CORNER OF LOT 14, CAMPBELL'S POINT SUBDIVISION. THIS ALIGNMENT SEEMS TO JUSTIFY THE 2 NON ORIGINAL MONUMENTS FOUND NEAR THE COMMON CORNERS OF LOTS 3 AND 4. THE ALIGNMENT ALSO SEEMS TO JUSTIFY THE LOCATION OF THE NON-ORIGINAL MONUMENT FOUND NEAR THE REAR COMMON CORNER OF LOTS 2 AND 3 OF CAMPBELL'S POINT SUBDIVISION UNIT - 2.
- THE RESULTS OF THESE TWO ALIGNMENTS HAS REVEALED AN OVERLAP OF THE TWO SECTIONS OF CAMPBELL'S POINT AS SHOWN HEREIN. THIS OVERLAP CONTAINS AN AREA OF 1,591.75 SQUARE FEET (0.04 ACRES) MORE OR LESS; INSIDE LOT 14 OF CAMPBELL'S POINT SUBDIVISION.



VICINITY MAP
N.T.S.



GARY D. & BRENDA K. McMAHAN
BOOK 1976 PAGE 1042
INSTRUMENT # 198905050020151
LOT 6
CAMPBELL'S POINT SUBDIVISION

CERTIFICATE OF ACCURACY

I HEREBY CERTIFY THAT THIS SURVEY MEETS OR EXCEEDS: THE MINIMUM STANDARDS OF PRACTICE IN THE STATE OF TENNESSEE; THE REQUIREMENTS OF A CATEGORY 1 SURVEY AND THAT THE RATIO OF PRECISION OF THE ORIGINAL UNADJUSTED FIELD MEASUREMENTS IS 1: 23,569.
I FURTHER CERTIFY THAT THIS SURVEY WAS PERFORMED UNDER MY DIRECT SUPERVISION; THAT THIS DRAWING ACCURATELY DEPICTS THE SURVEY, AND THAT IT IS TRUE AND CORRECT TO THE BEST OF MY KNOWLEDGE, INFORMATION, AND BELIEF. THE FIELD WORK WAS COMPLETED 02/16/2013. THE MONUMENTS SHOWN WERE LOCATED ON OR BEFORE THIS DATE.



- LEGEND
- EXISTING IRON PIN
 - ⊙ POWER POLE
 - SEWER MANHOLE
 - OVER HEAD POWER LINE
 - SEWER LINE
 - x - x - x - x - BARB WIRE FENCE
 - * * * * * WOOD PICKET FENCE
 - LOT LINE CAMPBELL'S POINT
 - LOT LINE CAMPBELL'S POINT UNIT-2
 - ▨ OVERLAP AREA INSIDE LOT 14

Adam Schmeing, PLS 2927
ADAM SCHMEING LAND SURVEYING
6619 CROSSGATE DRIVE
KNOXVILLE, TENNESSEE 37912



BOUNDARY SURVEY
LOT 14 OF
CAMPBELL'S POINT SUBDIVISION
DISTRICT 8, KNOX COUNTY, TENNESSEE
JENNIFER & RANDY LAMBERT
8012 CAMPBELL'S POINT ROAD
KNOX COUNTY, TENNESSEE 37721
ADAM SCHMEING LAND SURVEYING
SURVEYING THE PAST FOR A BETTER FUTURE
6619 CROSSGATE DRIVE
KNOXVILLE, TN 37912
812.321.4611
SCALE 1" = 60' DATE: 2/17/13 13001